

January 24, 2019

Attention: Media Stakeholders

The Sankei Building Co., Ltd.
Marriot International, Inc.

MARRIOTT INTERNATIONAL: The hotel brand's first in Japan

"ALOFT TOKYO GINZA"

Announcing the Start of Development

– The first foreign-affiliated hotel business by Sankei Building and Marriot International –

The Sankei Building Co., Ltd. (Head Office: Otemachi, Chiyoda-ku, Tokyo JAPAN. President & CEO: Kazunobu Iijima. Here in after "Sankei Building") and Marriot International, Inc. (Head Office: Maryland, United States. President and CEO: Arne M. Sorenson. Here in after "Marriott") announce the development commencement of ALOFT TOKYO GINZA (here in after "ALOFT TOKYO GINZA"), a hotel with selected services located at 6-chome Ginza, Chuo-ku, Tokyo.

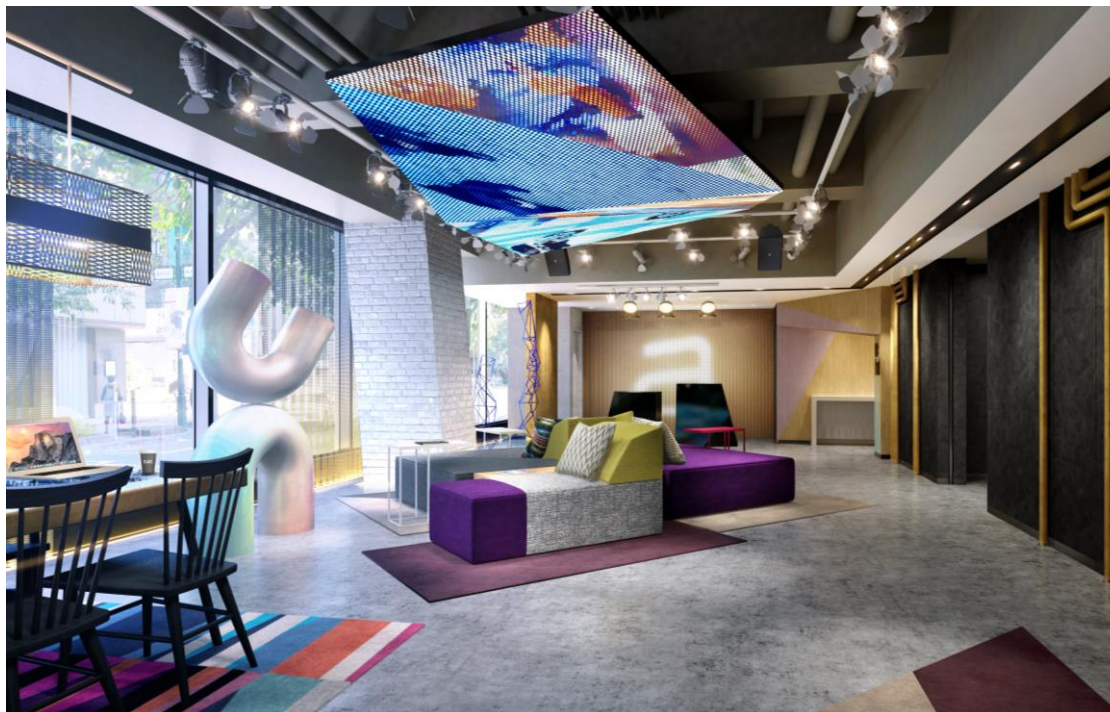
This project is the first partnership project with Marriott for Sankei Building. Sankei Building will be in charge of project development and Marriott will operate the hotel consisting of 206 rooms. The ALOFT brand is a next generation of "selected service hotel" which is the first of its kind to open in Japan. The hotel offers a substantially satisfying experience to its guests with evolutionary technologies that match customer's needs and an eye-catching design found nowhere else.



The hotel will be located at 6-chome Ginza which is a 4 minute walk from "Ginza" station of the Tokyo Metro Marunouchi Line and Ginza Line, or a 2 minute walk from "Higashi-ginza" station of the Tokyo Metro Hibiya Line and Toei Asakusa Line. Located at the superbly visible crossing of Miyuki-dori Avenue and Showa-dori Avenue, the location holds high potential in both tourism and business. The building will consist of 206 loft-style guest rooms including 4 suites and will express the design and functionality of the ALOFT brand. The construction of this new building has commenced and is scheduled to complete/open in spring of 2020.

<Perspective of building exterior upon completion>

ALOFT TOKYO GINZA houses a bar and shop on the first floor, and a restaurant and fitness gym on the second floor. On the first floor, guests can enjoy their cocktails at the bar together with live music performances of the ALOFT brand "Live At ALOFT Hotels Program". A shop on the same floor offers meals and beverages 24 hours a day. The restaurant on the second floor offers guests with the enjoyment of buffet style meals. At the indoor fitness gym, guests can refresh themselves and feel the sunshine from the windows facing Showa-dori Avenue.



<Perspective of lobby area upon completion>

Outline of Planned Building

Location (Address)	6-202-1 Ginza, Chuo-ku, Tokyo
Access	4 minute walk from "Ginza" station of Tokyo Metro Marunouchi and Ginza Lines 2 minute walk from "Higashi-ginza" station of Tokyo Metro Hibiya Line and Toei Asakusa Line
Site area	804.77 m ²
Total floor space	9,927.39 m ²
Building structure	Steel frame structure
No. of floors	16 floors above ground
Building amenities	Hotel/Restaurant
No. of rooms	206 rooms
Guest room features	Double-size (King-size) bed: 94 rooms, Twin (double-double-size) beds: 108 rooms Suites: 4 rooms
Architect	MITSUBISHI Jisho Sekkei Inc.
Interior design	W Design International
Contractor	TODA CORPORATION
Scheduled completion	January 2020

*Information indicated on this news release is based on a plan as of this date this release, and may be subject to changes.

Inquiries related to this release

Public Relations Section, The Sankei Building Co., Ltd.

TEL : 03-5542-1313 FAX : 03-5542-1377

* Distribution of this material: Press affiliated with the Japanese Ministry of Land, Infrastructure and Transportation, specialized construction industry press affiliated with the Ministry of Land, Infrastructure and Transportation.